

VIPER 640



2012 NORTH AMERICANS
MARBLEHEAD

SAILING INSTRUCTIONS

2012 Viper 640 North American Championship

September 6 – 9, 2012
Sailing Instructions



HOSTED BY
Eastern Yacht Club, Marblehead, MA

1 ORGANIZING AUTHORITY AND RULES

- 1.1 This regatta will be governed by the rules as defined in The Racing Rules of Sailing (rules).
- 1.2 The Marblehead Viper 640 Fleet is the Organizing Authority, and the Eastern Yacht Club is the Host Club for this event.

2 NOTICES TO COMPETITORS

Notices to competitors will be posted on the official notice board located opposite the front desk at the Eastern Yacht Club.

3 CHANGES TO SAILING INSTRUCTIONS

Any change to the sailing instructions will be posted before 0900 on the day it will take effect, except that any change to the schedule of races will be posted by 2000 on the day before it will take effect.

4 SIGNALS MADE ASHORE

- 4.1 Signals made ashore will be displayed at the Casey flagpole at the Eastern Yacht Club.
- 4.2 When flag AP is displayed ashore, "1 minute" is replaced with "no less than 75 minutes" in the race signal AP.

5 SCHEDULE OF EVENTS

Wednesday, September 5	1200 – 1700	Registration – Eastern Yacht Club
	1200 - 1700	Inspection – Eastern Yacht Club
	1800	Dinner at Whitecap Composites, Peabody MA

Thursday, September 6	0800 – 1000	Registration – Eastern Yacht Club
	0800 - 1000	Inspection – Eastern Yacht Club

	1015	Competitors Meeting
	1300	Initial warning, first race
	1900	Dinner at Maddie's Sail Loft (pay as you go)
Friday, September 7	1200	Initial warning, racing resumes
	1900	Inclusive BBQ at Eastern Yacht Club
Saturday, September 8	1200	Initial warning, racing resumes
	1800	Viper 640 Class Annual General Meeting and inclusive Dinner at Eastern Yacht Club thereafter
Sunday, September 9	1200	Initial warning, racing resumes
	1430	No initial warning signal thereafter
	After racing	Awards presentation

6 MEASUREMENT

- 6.1 Each boat shall be inspected prior to 1000 on Thursday morning and have an inspection sheet signed by a member of the Viper 640 Class Technical Committee and may be further inspected at any time during the regatta for compliance with the Viper 640 class rules.

7 BOW NUMBERS

- 7.1 Bow numbers will be provided at registration.
- 7.2 Supplied bow numbers shall be displayed on both sides of the hull with the leading edge of the forward number no more than six inches aft of the bow and the top of the number approximately two inches below the sheerline.

8 CLASS FLAGS

The class flag will be the Viper 640 class flag.

9 RACING AREA

Attachment I shows the location of the racing area, which is on the Tinkers Line in Massachusetts Bay.

10 THE COURSES

- 10.1 The diagrams in Attachment II show the courses, including the approximate angles between legs, the order in which the marks are to be passed, and the side on which each mark is to be left.
- 10.2 No later than the warning signal, the race committee signal boat will display the approximate compass bearing and distance of the first leg.

11 MARKS

- 11.1 Marks, except the start, finish and offset marks, will be orange tetrahedrons.
- 11.2 The offset mark will be an orange ball.
- 11.3 An offset mark may not be set if there is a change of course.
- 11.4 New marks, as provided in instruction 13, will be yellow tetrahedrons. When in a subsequent change of course a new mark is replaced, it will be replaced with an original mark.
- 11.5 The starting marks will be race committee boats.
- 11.6 The finishing marks will be a race committee boat and a green tetrahedron.

12 THE START

- 12.1 The starting line will be between staffs displaying orange flags on the race committee signal boat and a boat at the port end of the starting line.
- 12.2 The race committee may use a midline boat at the start. If a midline boat is used the starting line will be between staffs displaying orange flags on the race committee signal boat and the starboard side of the midline boat, and between staffs displaying orange flags on the port side of the midline boat and a boat at the port end of the starting line.
- 12.3 If a midline boat is used at the start and the I flag has been displayed, a boat whose hull, crew or equipment is on the course side of the starting line or its extensions during the last minute before her starting signal may sail around the midline boat leaving it to port before starting. This changes rule 30.1.
- 12.4 A boat starting later than five minutes after her starting signal will be scored Did Not Start without a hearing. This changes rules A4 and A5.
- 12.5 If any part of a boat's hull, crew or equipment is on the course side of the starting line at her starting signal and she is identified, the race committee may broadcast her sail number or bow number on the designated hailing channel. Failure to do so, the order of hails, the timeliness of hail or hails and/or the failure to hear the hails or hail will not be grounds for granting redress. This changes rule 62.1(a).

13 CHANGE OF THE NEXT LEG OF THE COURSE

To change the next leg of the course, the race committee will lay a new mark (or move the finishing line) and remove the original mark as soon as practicable.

14 THE FINISH

The finishing line will be between a race committee boat displaying a blue flag and the nearby finishing mark.

15 PENALTIES

Rule 44.1 is changed so that the Two –Turns Penalty is replaced by the One-turn penalty when a boat breaks a rule of Part 2 outside the zone of a rounding or finishing mark.

16 TIME LIMITS AND TARGET TIMES

The time limit will be two hours. Boats failing to finish within twenty minutes after the first boat sails the course in compliance with rule 28.1 and finishes will be scored TLE without a hearing. This changes rules 35, A4 and A5.

17 PROTESTS AND REQUESTS FOR REDRESS

- 17.1 Protests and requests for redress or reopening shall be delivered to the protest desk at the Eastern Yacht Club. This will be in the vicinity of the front desk.
- 17.2 A boat's protest time limit is 60 minutes from the docking time of the race committee signal boat.
- 17.3 On the last scheduled day of racing a request for reopening a hearing shall be delivered a) within the protest time limit if the requesting party was informed of the decision on the previous day or earlier, or b) no later than 3 minutes after the requesting party was informed of the decision on that last day. This changes rules 62.2 and 66.
- 17.4 On the last scheduled day of racing a request for redress based on a protest committee decision shall be delivered no later than 30 minutes after the decision was posted. This changes rule 62.2.

18 SCORING

- 18.1 One race constitutes a regatta.
- 18.2 If six (6) or more races are sailed, a boat's worst score shall be excluded.

19 SAFETY REGULATIONS AND WITHDRAWALS

- 19.1 Boats shall check in prior to the first race of each day by passing astern of the race committee signal boat on starboard tack and hailing her sail number and receiving an acknowledgment
- 19.2 A boat that retires from a race shall notify the race committee as soon as possible. A boat may notify the race committee using the designated hailing channel.

20 REPLACEMENT OF CREW OR EQUIPMENT

Boats shall sail with the same crew each day unless written approval has been provided by the Protest Committee and posted on the Official Notice Board.

21 ADVERTISING

A boat may be required to display advertising chosen and supplied by the organizing authority.

22 SUPPORT BOATS

- 22.1 Coaches and other support personnel shall stay outside areas where boats are racing from the time of the first preparatory signal of the day until all boats have finished or retired from the final race of the day.
- 22.2 Violations of this section shall only be grounds for protest by the race committee or protest committee. This changes rules 60.1 and 60.3.

23 RADIO COMMUNICATIONS

- 23.1 Each boat shall carry a VHF radio capable of transmitting and receiving VHF channel 71.

Except in emergency, a boat shall neither make radio transmissions while racing nor receive radio communications not available to all boats. This restriction also applies to mobile telephones and other communication technologies.

24 COURTESY BROADCASTS

- 24.1 The courtesy broadcast channel will be 71.
- 24.2 Errors or omissions in courtesy broadcasts will not be grounds for granting redress. This changes rule 62.1(a).

25 PRIZES

Prizes will be awarded to the top five finishes, Pride of Peloton and Daily Pelotons (Silver, Gold and Platinum).

Pride of Peloton will be awarded to the top overall finisher who does not have a single 1st quartile finish during the regatta.

Daily Pelotons will be awarded as follows:

Silver: top 2nd quartile daily finish

Gold: top 3rd quartile daily finish

Platinum: top 4th quartile daily finish

26 DISCLAIMER OF LIABILITY

Competitors participate in the regatta entire at their own risk (See RRS 4, Decision to Race). The Organizing Authority and the Host Club will not accept liability for material damage or personal injury or death sustained in conjunction with or prior to, during, or after the regatta. Each person racing on board a boat entered in the regatta shall sign a waiver for loss, damage or injury to their person or property in conjunction with the regatta or while on the premises of the Eastern Yacht Club. The Eastern Yacht Club, the Viper 640 Association, the Viper 640 Marblehead Fleet, and their member volunteers, employees, officers and agents shall not be responsible for any loss, damage or injury that may occur to persons (s) or property whether ashore or at sea as a conse-

quence of the participation of any boat, competitor or participant.

27 CONTACT INFORMATION

For further information, please contact co-chairpersons

Daan Goedkoop 617.504.0980 or dgoedkoopster@gmail.com

Dan Tucker 781.799.8132 or dan@rondarboats.com

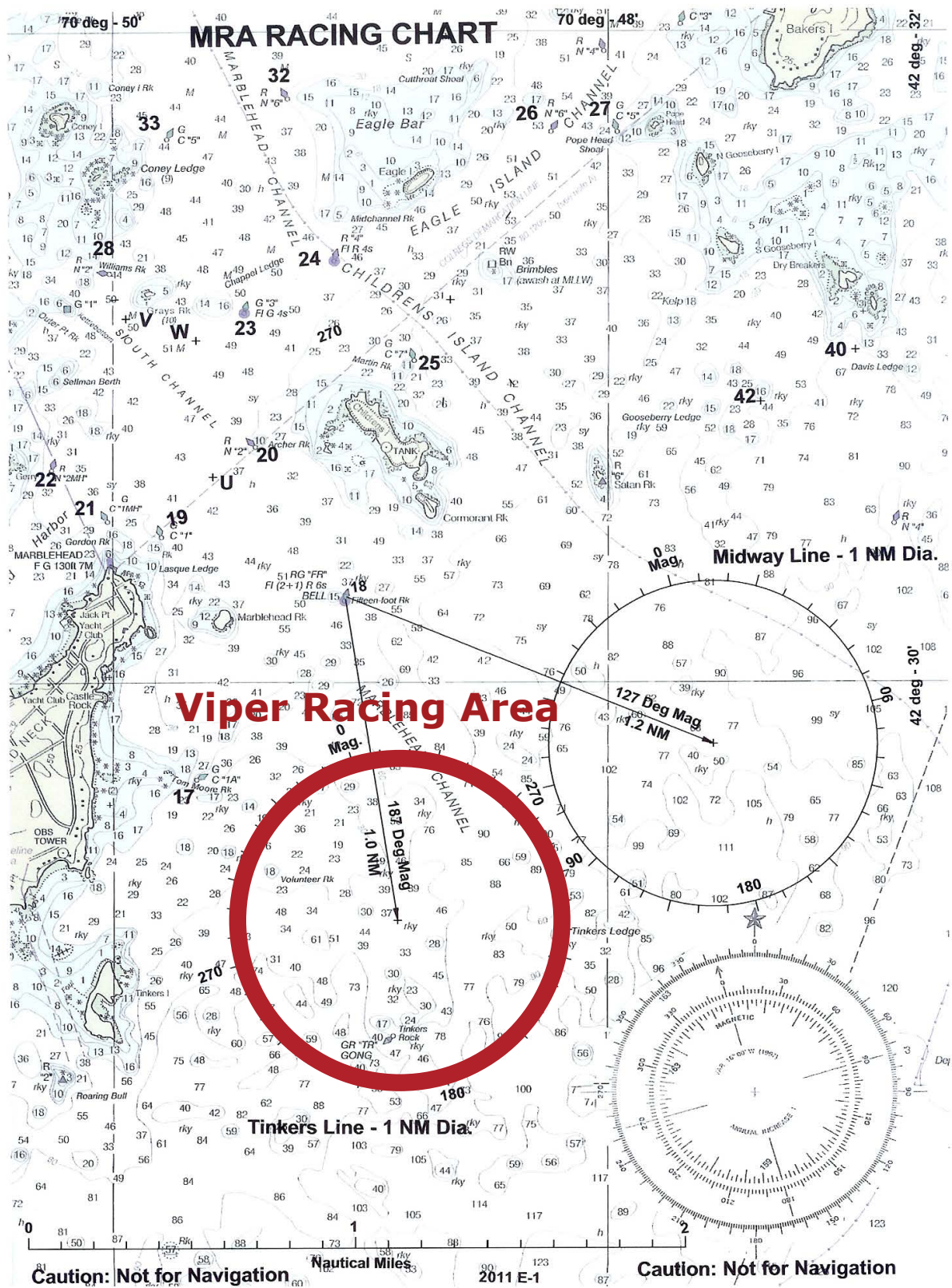
Eastern Yacht Club 781.631.1400, <http://www.easternyc.org>

The Eastern Yacht Club and the Viper 640 Class Association thank their sponsors for their support of this event



The 2012 Viper North Americans is presented by EFG Bank, with additional support from Bacardi, Rondar Raceboats, Atlantis Weathergear, Ullman Sails, Doyle Sails, Evolution Sails, North Sails, Whitecap Composites and Mauri Pro Sailing.



Attachment I – Approximate Racing Area



Attachment II: Course Diagrams

Course 4 	Course 5 
Start, 1 (port), 1a (port), between 2S and 2P, 1(port), 1a (port), Finish	Start, 1 (port), 1a (port), between 2S and 2P, 1(port), 1a (port), between 2S and 2P, Finish

